



Breakdown and Parts list  
Schéma et La liste de Pièces

## **CD04, CD04pt**

4" Corel Drill / Carotteuse 4"



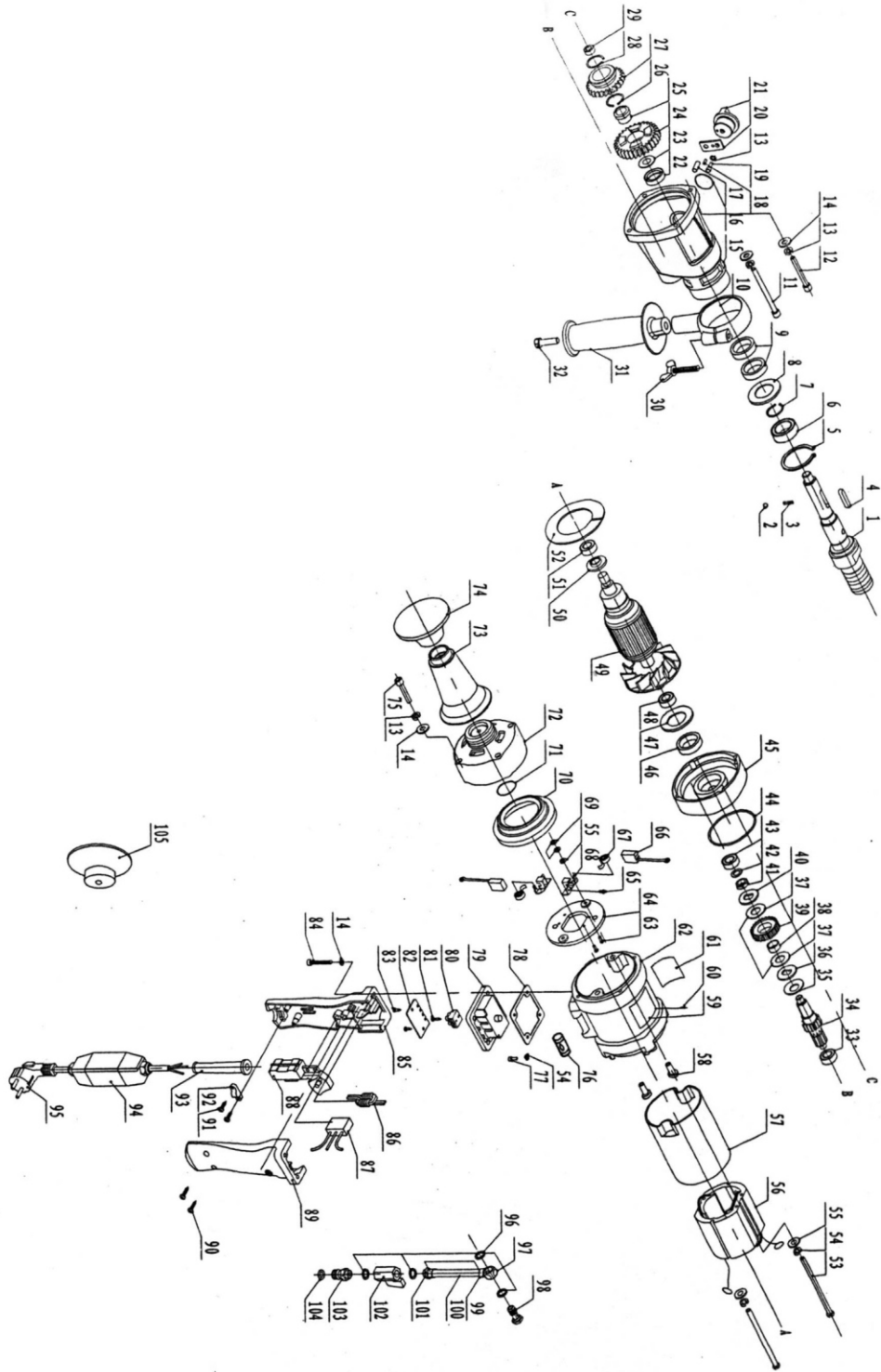
Tel: 1-877-405-2626, Fax: 1-877-405-8686

Web: [cm-equip.com](http://cm-equip.com) E-mail: [orderdesk@cm-equip.com](mailto:orderdesk@cm-equip.com)

CD04 Parts list

| No.            | Name                                    | No.              | Name                                    | No.          | Name                           |
|----------------|---|------------------|---|--------------|--------------------------------|
| cd04-01to03    | OUTPUT SHAFT                            | cd04-40          | Pressing ring                           | cd04-92      | Cable press board              |
| 01to09/15to29  | COMPLETE GEAR CASING                    | cd04-41          | Hexagonal nut (M12)                     | cd04-93      | Rubber jacket                  |
| cd04-04        | Flat key (A5X32)                        | cd04-42          | Shim (16X10X1)                          | cd04-94      | CGFI/PRCD (Reset switch)       |
| cd04-05        | Spring shiel ring                       | cd04-43          | Quill bearing HK1010                    | cd04-95      | Cable & plug                   |
| cd04-06        | Ball bearing 6005                       | cd04-44          | O-shape sealing ring                    | cd04-96      | Washer for water kit           |
| cd04-07        | Shield ring for shaft                   | cd04-45          | Middle cover                            | cd04-96to104 | WATER KIT ASSEMBLY             |
| cd04-08        | Shim cover                              | cd04-45/44/43/29 | MID-COVER ASSEMBLY                      | cd04-97      | Connector for water kit        |
| cd04-09        | Bucket rubber sealing ring (FB25x40x7)  | cd04-46          | Bracket rubber sealing ring             | cd04-98      | Tightening screw for water kit |
| cd04-10        | Assistant handle cover (hook)           | cd04-47          | Oil seal base shim                      | cd04-CASE    | Plastic case for CD04pt        |
| cd04-10/30to32 | ASSISTANT HANDLE ASSEMBLY               | cd04-48          | Ball bearing 6201                       | cd04-LUBE    | Gear oil change                |
| cd04-11        | Inner hexagonal round head bolt (M5X75) | cd04-49          | Armature assy (Rotor)                   | cd04-102     | Ball valve for water kit       |
| cd04-12        | Inner hexagonal round head bolt (M5X55) | cd04-50          | Rear insulating cover                   | cd04-103     | Connector for water switch     |
| cd04-13        | Spring washer 5                         | cd04-51          | Ball bearing 6200                       | cd04-104     | O-shape sealing ring           |
| cd04-15        | Gear shell                              | cd04-52          | Shield board                            | cd04-105     | Rear cover with level          |
| cd04-16        | O-shape sealing ring                    | cd04-54          | Spring washer (M4)                      |              |                                |
| cd04-17        | Round pin (5X16)                        | cd04-56          | Stator assembly                         |              |                                |
| cd04-19        | Inner Hex round head bolt M5x12         | cd04-57          | Stator Insulating cover                 |              |                                |
| cd04-20        | Adjustable speed block                  | cd04-58          | Insulating shim                         |              |                                |
| cd04-21        | Adjustable speed knob                   | cd04-62          | Shell                                   |              |                                |
| cd04-21/16to20 | ADJUSTABLE SPEEB KNOB ASSEMBLY          | cd04-63/64/68    | BRUSH HOLDER BASE PLATE ASSLY.          |              |                                |
| cd04-22        | Bucket rubber sealing ring (FB20x35x7)  | cd04-65          | Crossed slot bolt (M3X6)                |              |                                |
| cd04-23        | Oil sealing base shim                   | cd04-66          | Electric brush set (2)                  |              |                                |
| cd04-24        | 6# gear                                 | cd04-67          | Coil spring                             |              |                                |
| cd04-25        | Copper cover                            | cd04-69          | Hexagonal nut (M4)                      |              |                                |
| cd04-26        | Shield ring for shaft                   | cd04-70          | Rear cover jacket                       |              |                                |
| cd04-27        | Gear #4                                 | cd04-71          | O-shape sealing ring                    |              |                                |
| cd04-28        | Shield ring for shaft                   | cd04-72          | Rear cover                              |              |                                |
| cd04-29        | Quill bearing HK1210                    | cd04-73/74       | REAR HANDLE ASSEMBLY                    |              |                                |
| cd04-30        | Butterfly bolt                          | cd04-75          | Inner hexagonal round head bolt (M5X40) |              |                                |
| cd04-31        | Assistant handle body                   | cd04-76          | Level pole                              |              |                                |
| cd04-32        | Hexagonal bolt (M14X45)                 | cd04-78          | Handle lining                           |              |                                |
| cd04-33        | Ball bearing NSK629                     | cd04-79          | Handle bracket                          |              |                                |
| cd04-34        | 3# gear shaft                           | cd04-84          | Inner hexagonal round head bolt (M5X35) |              |                                |
| cd04-34to41    | CLUTCH ASSEMBLY                         | cd04-85/89       | HANDLE ASSEMBLY                         |              |                                |
| cd04-35        | Dishing spring                          | cd04-86          | Inductance                              |              |                                |
| cd04-36        | Pressing ring                           | cd04-87          | Capacitance(0.33uf)                     |              |                                |
| cd04-37        | Friction shim                           | cd04-88          | Switch                                  |              |                                |
| cd04-38        | Copper cover                            | cd04-90          | Crossed slot tapping bolt (Set of 2)    |              |                                |
| cd04-39        | 2# gear                                 | cd04-91          | Crossed slot tapping bolt (Set of 2)    |              |                                |

# C04-breakdown



### CD04 stand parts list

| No.           | Name                                    |
|---------------|---|
| cd04-S01      | Inner hexagonal round head bolt (M8X30) |
| cd04-S01toS03 | HOLDING BASE ASSEMBLY                   |
| cd04-S04      | Flat key                                |
| cd04-S05      | Lift                                    |
| cd04-S09      | Stop knob                               |
| cd04-S15      | Ellipse handle cover                    |
| cd04-S16      | Operating stick for machine             |
| cd04-S17      | Operating stick sleeve                  |
| cd04-S18      | Sleeve fasten assembly (lock pin)       |
| cd04-S19      | Crossed countersunk bolt (M4X6)         |
| cd04-S20      | Orbit block                             |
| cd04-S21      | Orbit block                             |
| cd04-S23      | Hexagonal bolt (M12X65)                 |
| cd04-S24      | Circlip for shaft                       |
| cd04-S25      | Ball bearing 6003                       |
| cd04-S26      | Operating gear wheel axle               |
| cd04-S27      | Stand pole groupware                    |
| cd04-S28      | Rod                                     |
| cd04-S31      | Lift body cover                         |
| cd04-S35      | Pressure plate for base                 |
| cd04-S36      | Base for stand                          |
| cd04-S37      | Hexagonal nut (M16)                     |
| cd04-S38      | Hexagonal bolt (M16X75)                 |
| cd04-S40      | Inner hexagonal round head bolt (M6X30) |
| cd04-S41      | Handle of lift body                     |
| cd04-S42      | Inner hexagonal bolt (M6X20)            |
| cd04-SS       | SOFT START MODULE                       |

# CD04-stand breakdown

